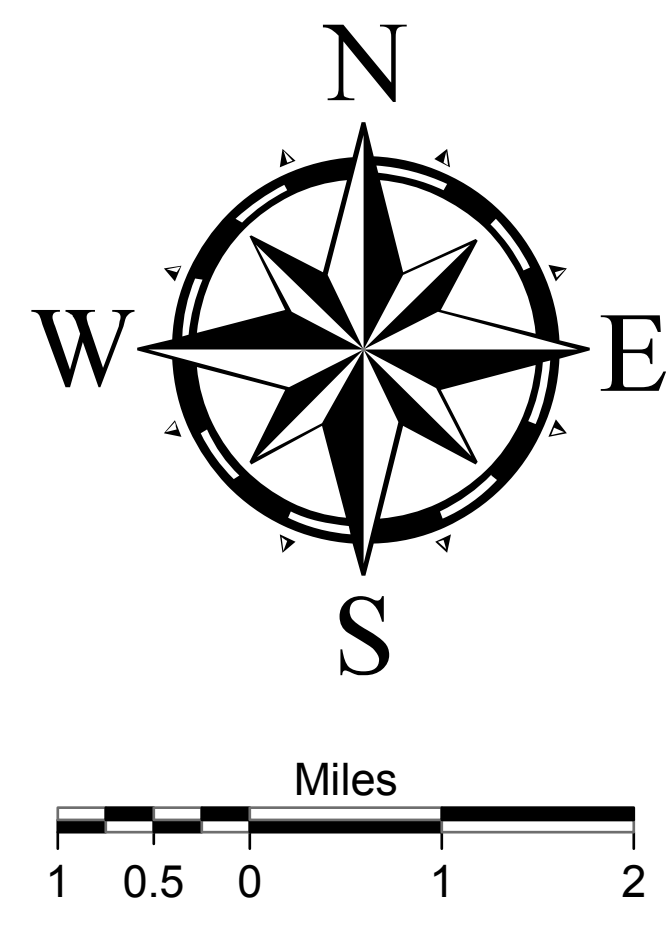
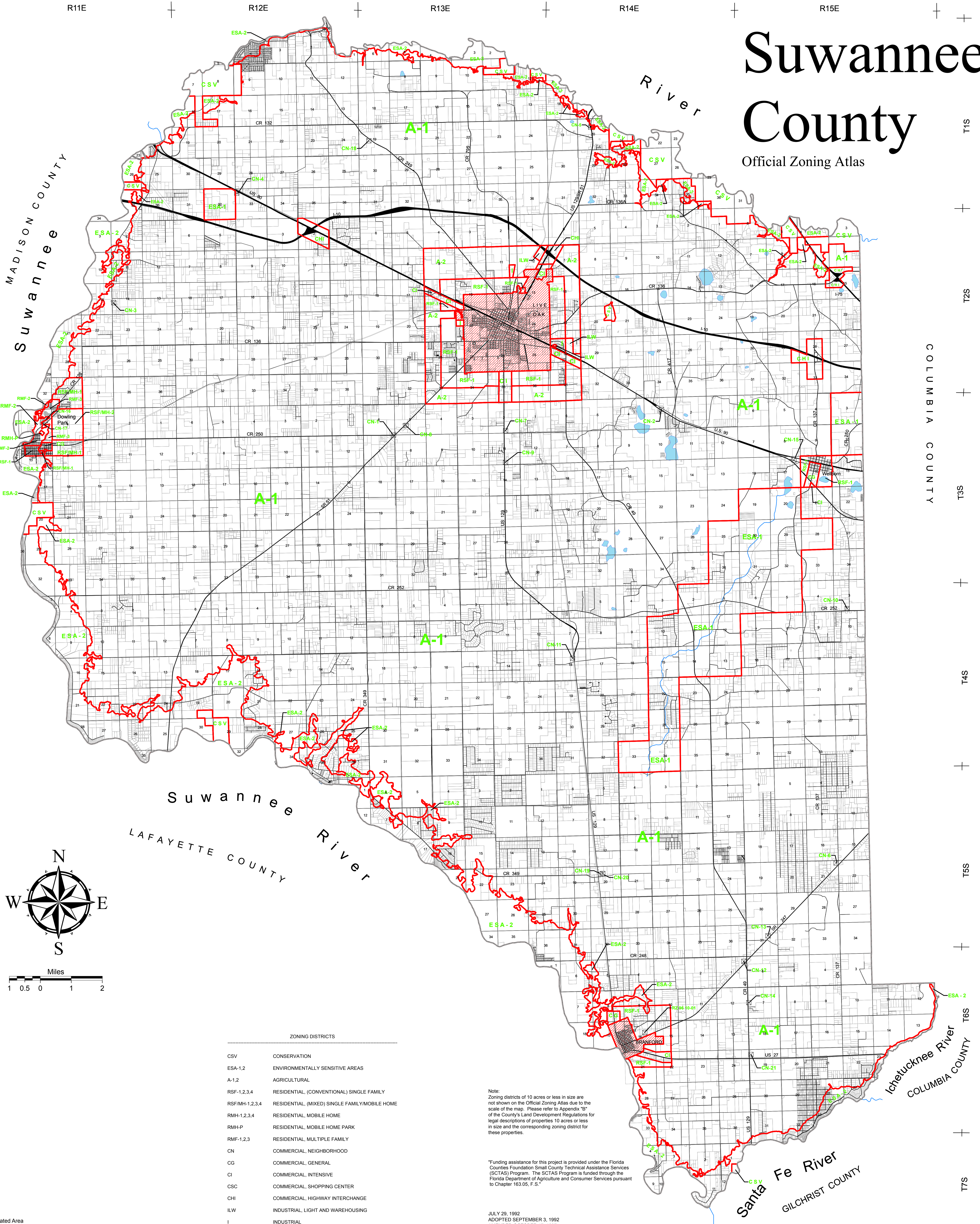


Suwannee County

Official Zoning Atlas



ZONING DISTRICTS	
CSV	CONSERVATION
ESA-1,2	ENVIRONMENTALLY SENSITIVE AREAS
A-1,2	AGRICULTURAL
RSF-1,2,3,4	RESIDENTIAL, (CONVENTIONAL) SINGLE FAMILY
RSF/MH-1,2,3,4	RESIDENTIAL, (MIXED) SINGLE FAMILY/MOBILE HOME
RMH-1,2,3,4	RESIDENTIAL, MOBILE HOME
RMH-P	RESIDENTIAL, MOBILE HOME PARK
RMF-1,2,3	RESIDENTIAL, MULTIPLE FAMILY
CN	COMMERCIAL, NEIGHBORHOOD
CG	COMMERCIAL, GENERAL
CI	COMMERCIAL, INTENSIVE
CSC	COMMERCIAL, SHOPPING CENTER
CHI	COMMERCIAL, HIGHWAY INTERCHANGE
ILW	INDUSTRIAL, LIGHT AND WAREHOUSING
I	INDUSTRIAL
PRD	PLANNED RESIDENTIAL DEVELOPMENT
PRRD	PLANNED RURAL RESIDENTIAL DEVELOPMENT

- Legend**
- Incorporated Area
 - County Boundary Line
 - Zoning Boundary
 - Parcels
 - Roads
 - See Appendix "B" - Commercial Neighborhood Districts

Note:
Zoning districts of 10 acres or less in size are not shown on the Official Zoning Atlas due to the scale of the map. Please refer to Appendix "B" of the County's Land Development Regulations for legal descriptions of properties 10 acres or less in size and the corresponding zoning district for these properties.

Funding assistance for this project is provided under the Florida Counties Foundation Small County Technical Assistance Services (SCTAS) Program. The SCTAS Program is funded through the Florida Department of Agriculture and Consumer Services pursuant to Chapter 163.05, F.S.

JULY 29, 1992
ADOPTED SEPTEMBER 3, 1992
AMENDED OCTOBER 17, 1997

